

# Fire Station 6, 8, 13 Project Updates

March 14, 2023



Archimages





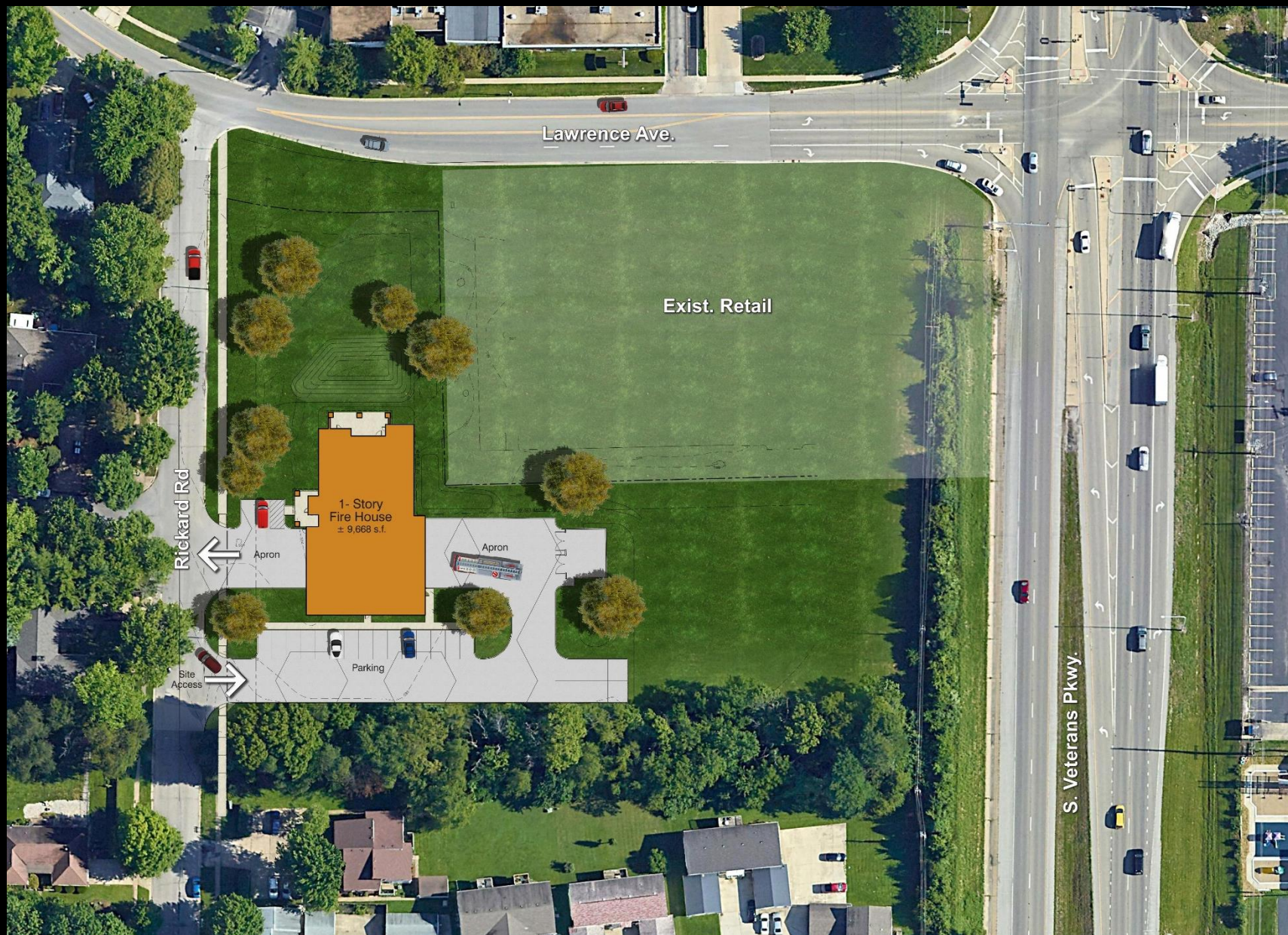
- SW corner E Ash & 11<sup>th</sup>
- Drive Through Bays
- Staff / Visitor Parking
- Community Room
- Double Bay Aprons
- Multi Point Access
- Large Green Spaces



# Fire Station #6 - Site Plan

Archimages





- Lawrence & Rickard
- Drive Through Bays
- Staff / Visitor Parking
- Double Bay Aprons
- Screened Dumpster
- Access Additional Site



# Fire Station #8 - Site Plan

Archimages





- Spaulding Orchard Rd.
- Drive Through Bays
- Staff / Visitor Parking
- Double Bay Aprons
- Screened Dumpster
- Maintain Vegetation



# Fire Station #13 - Site Plan

Archimages





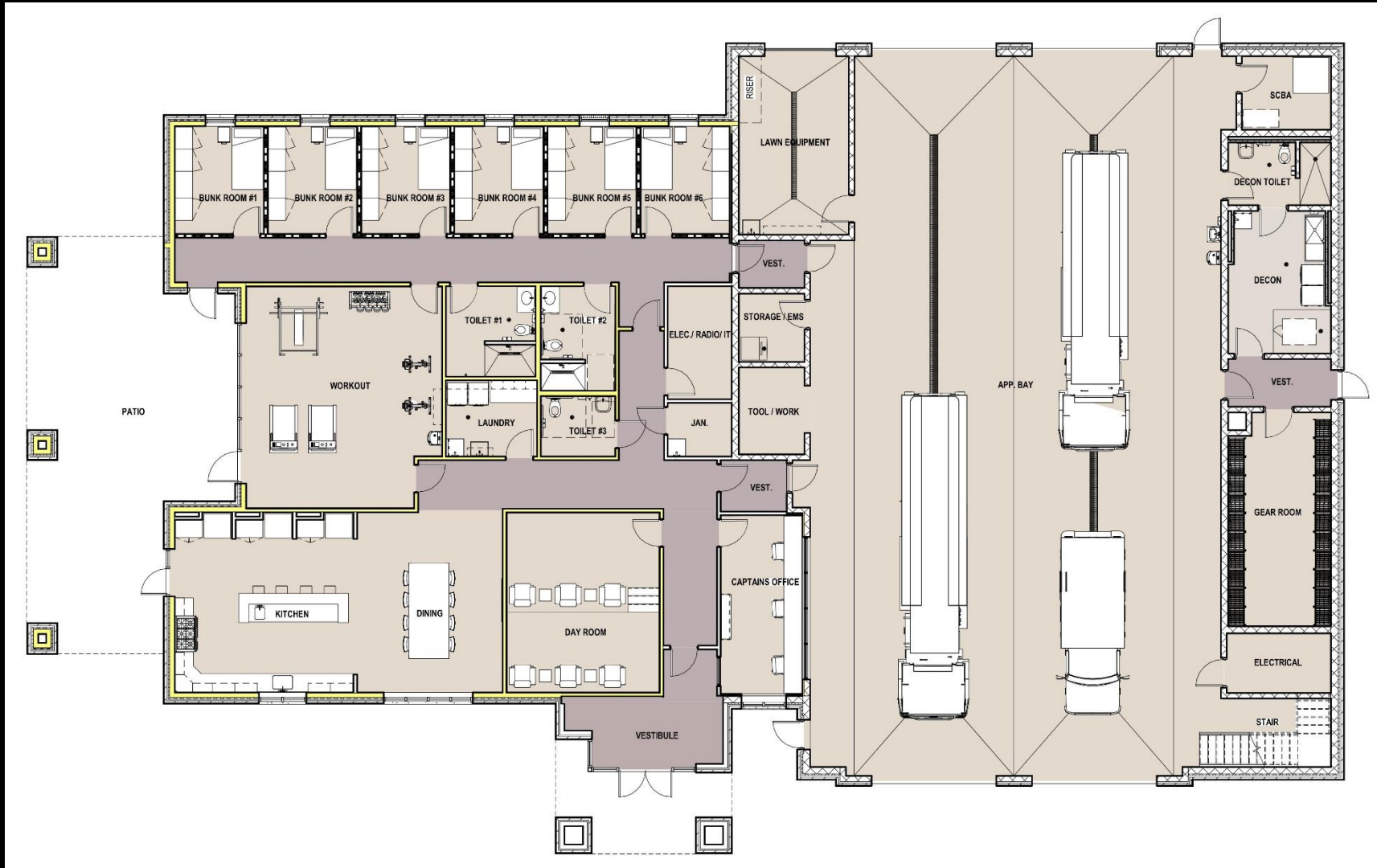
- **Community Center**
- **Police Substation**
- **Kitchen/Dining/Day Room**
- **Captain's Office**
- **Workout Room**
- **8-Bunk Rooms**
- **2-Bay Drive Through**
- **Decon / Gear Storage**
- **12,598 s.f.**



# Fire Station #6- Floor Plan

Archimages

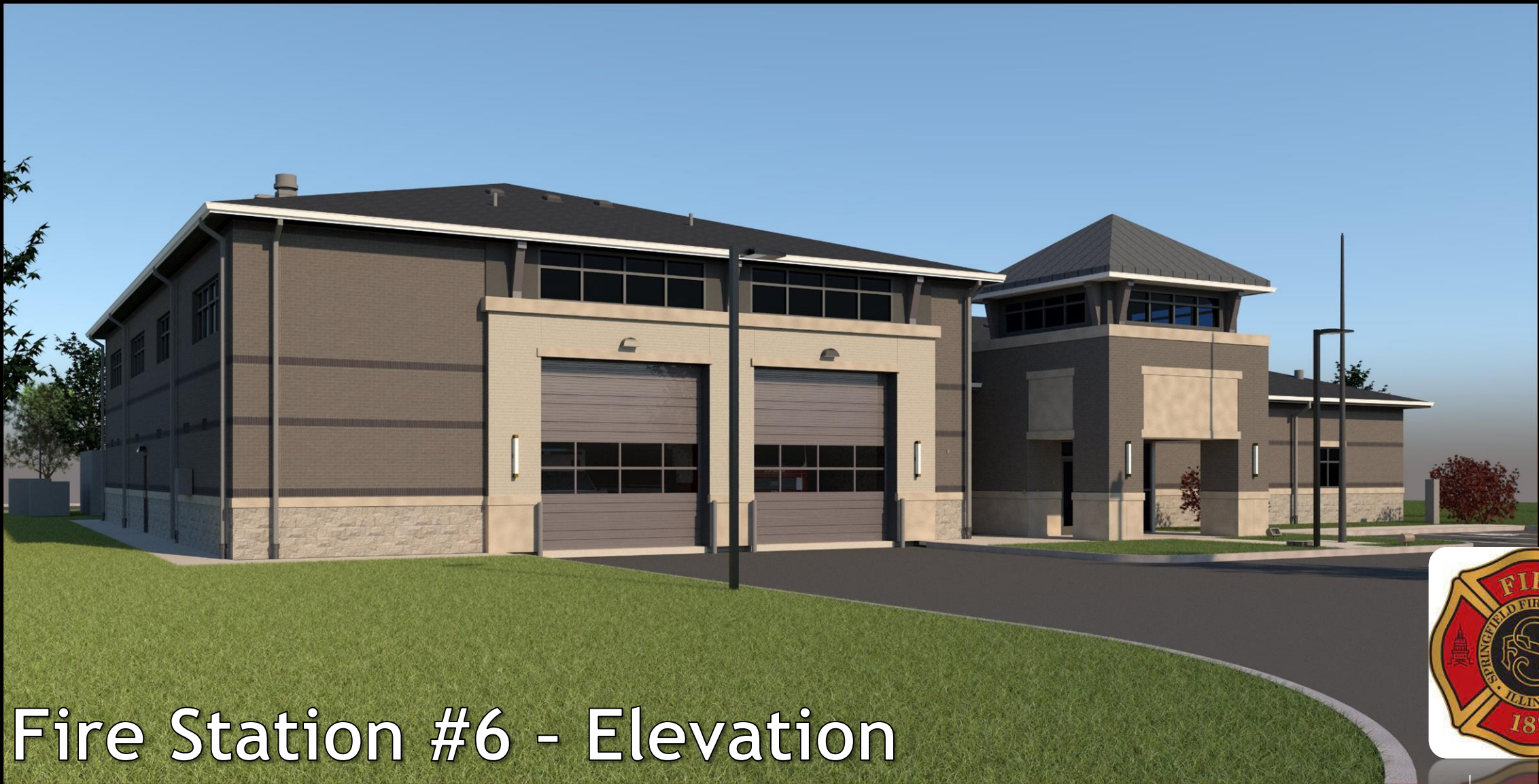
- Kitchen/Dining/Day Room
- Captain's Office
- Workout Room
- 6-Bunk Rooms
- 2-Bay Drive Through
- Decon / Gear Storage
- 10,282 s.f.



**Fire Station #8 & 13 - Floor Plan**

Archimages





Fire Station #6 - Elevation







Fire Station #6 - Elevation





- Masonry Exterior
- Stone Accents
- Earth Tone Color Pallet
- Insulated Window System
- Insulated Bay Doors

Fire Station #6 - Elevation





- Masonry Exterior
- Stone Accents
- Earth Tone Color Pallet
- Insulated Window System
- Insulated Bay Doors



Fire Station #8 & #13 -Elevation



Archimages



- Accent Lighting
- 14' x 14' Bay Doors
- Earth Tone Color Palette



Fire Station #8 & #13 -Elevation

Archimages



Questions?

Thank you!



Archimages